

Previous Action Agenda Processes in the San Juan LIO

Presentation to the San Juan LIO AOC

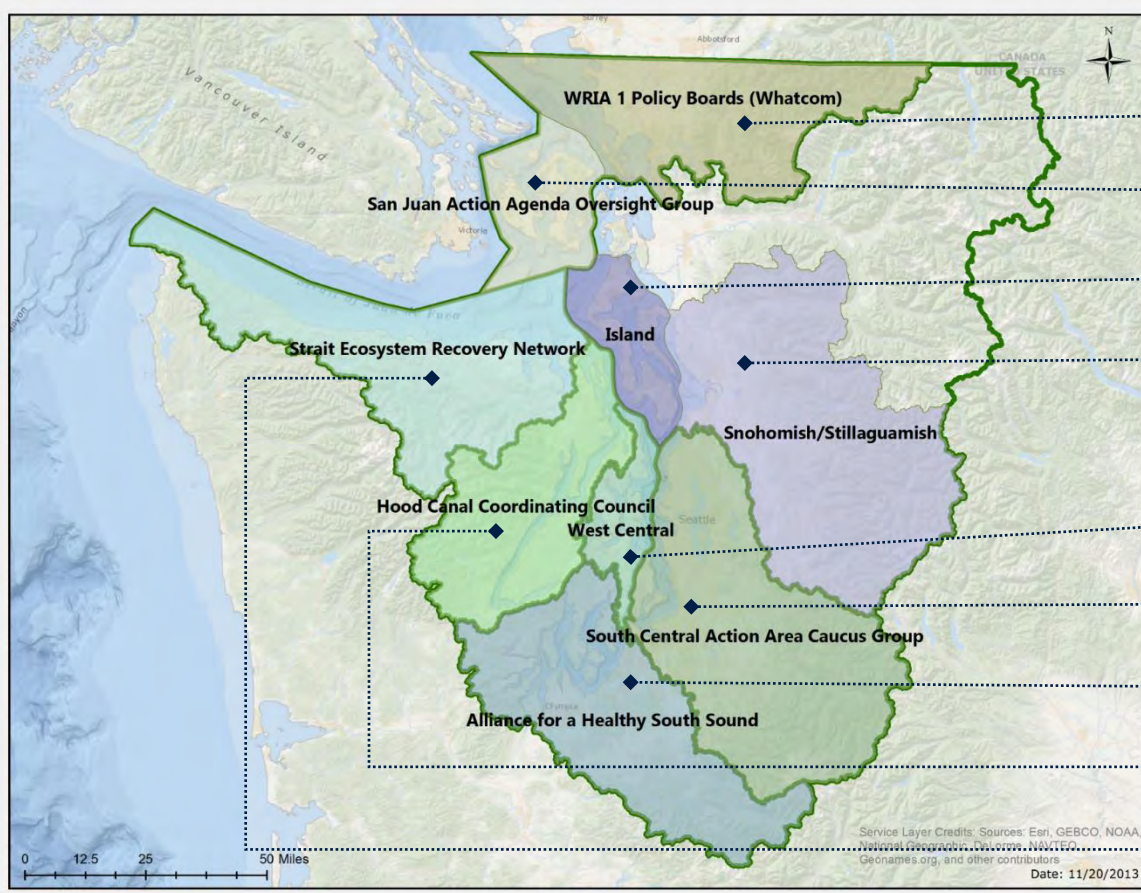
Scott Williamson, Ecosystem Recovery Coordinator

Puget Sound Partnership

May 13, 2015



Local Integrating Organizations

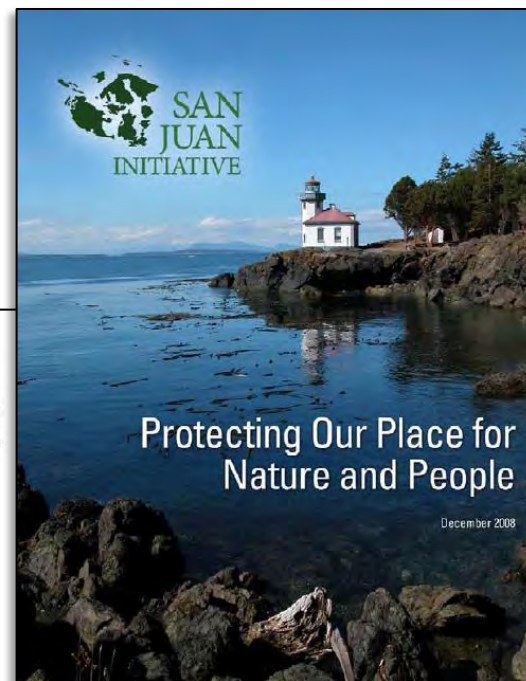
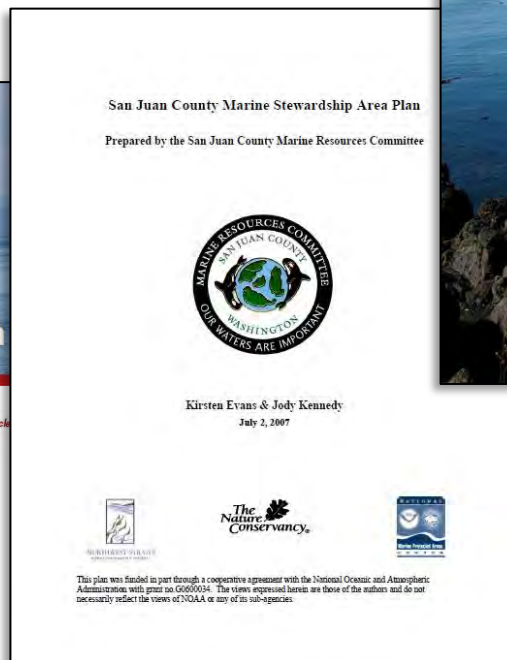
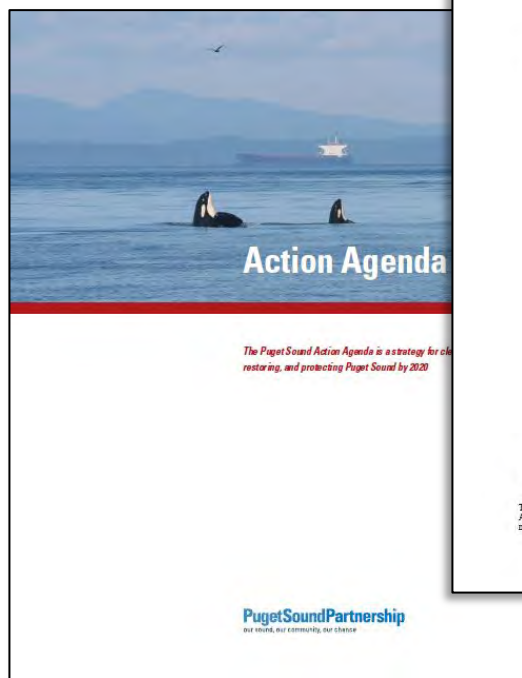


LIOs

- Whatcom
- San Juan
- Island
- Snohomish/
Stillaguamish
- West Central
- South Central
- South Sound
- Hood Canal
- Strait

San Juan Processes Pre-LIO

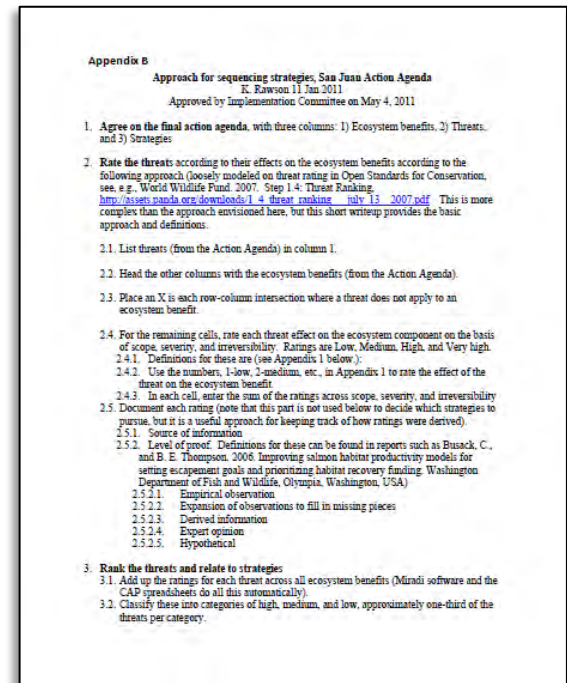
- Marine Stewardship Area planning
- San Juan Initiative
- 2008 Action Agenda local profile



LIO Process (2011-2012)

Prioritization Framework & Approach to Sequencing

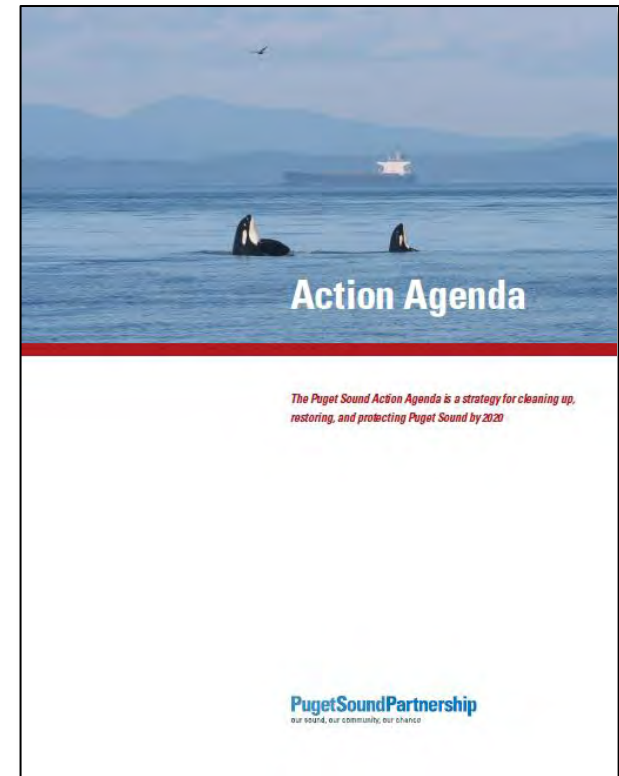
- Prioritization Framework
 - General process points
 - Approved by AOC January 2011
- Approach for Sequencing Strategies
 - Operationalized the Prioritization Framework
 - Based on Open Standards for Conservation (Open Standards “light”)
 - Approved by Implementation Committee May 4, 2011



LIO Process (2011-2012)

Steps in the Approach for Sequencing Strategies

- Agree on the (2008) Action Agenda
 - Ecosystem Benefits
 - Threats (Pressures)
 - Strategies
- Rate the Pressures
- Rank the Pressures and relate to Strategies
- Choose Strategies to pursue initially



LIO Process (2011-2012)

Agreeing on the 2008 Action Agenda

- Added Additional Ecosystem Benefits
- Classified Ecosystem Benefits into a similar level of components
(e.g. Lumped rocky sub-tidal habitat, urchin, sea cucumber, etc. into Rocky Reef Habitat)
- Split out Ecosystem Benefits from the Human Benefits that they result in
- Initial cross-walk of local Pressures to Puget Sound taxonomy of Pressures*
- Refined strategies



**Needs updating*

LIO Process (2011-2012)

Rating Pressures

- May 20, 2011 Implementation Committee workshop
 - Connected Pressures to parts of the San Juan ecosystem they impact
 - Workshop Follow-up:
 - IC Members (5) Rated Scope, Severity, Irreversibility of each pressure on each ecosystem benefit it impacts
 - Top 3rd of Pressure scores received a “High” rating
 - June 1, 2011 IC Meeting
 - IC re-categorized Pressures*, identified top 3
- *Needs updating*

Appendix E - Revised Threat Ranking (6/1/2011)

Name: All Respondents

Settings: 1) Add to the existing scores for each threat to target. 2) Now threats score all target. 3) Note and score to see whether weights. 4) Ratings revised and modified based on group feedback (6/1/2011).

Threat	Sub-Threat	Classification	Notes
Agriculture and aquaculture	<u>Agriculture, livestock raising</u>	Medium	Agriculture, livestock raising has a high threat to wildlife, birds.
	<u>Aquaculture</u>	Low	Low because aquaculture is mostly land-based.
	<u>Timber harvest</u>	Low	Loss or degradation of riparian vegetation, physical block of fish passage, degradation of water quality.
Biological resource use	<u>Animal harvesting (aquatic)</u>	Medium	Fishing and other commercial and recreational harvest of salmon and ground fish (e.g. rockfish, and large fish) may reduce recovery potential (overharvest harvest, habitat, water quality, ...)
Human intrusions and disturbances	<u>Recreational activities</u>	Medium	Population increases significantly in summer months resulting in increases in boat infrastructure and water quality.
	<u>Marine shoreline infrastructure (airports, marinas, ports, etc.)</u>	Medium	Marine shoreline infrastructure (airports, marinas, ports, etc.) resulting in degradation of water quality, habitat degradation, and noise.
Residential and Commercial	<u>Military operations</u>	Low	
	<u>Coastal Development (including shoreline armoring)</u>	High	Construction of other uses (residential or commercial) in the immediate vicinity of the shoreline may result in increased erosion, increased sedimentation, increased turbidity, increased noise, increased air quality, and increased water quality in the immediate vicinity.
Transportation and service corridors	<u>Other Residential & Commercial Development</u>	Medium	Construction of other uses (residential or commercial) in the immediate vicinity of the shoreline may result in increased erosion, increased sedimentation, increased turbidity, increased noise, increased air quality, and increased water quality in the immediate vicinity.
	<u>Transportation and service corridors</u>	Low	Highway, airport, and other transportation infrastructure.
Pollution	<u>Runoff from built environment (including septic systems)</u>	High	Runoff from built environment (including septic systems) may result in increased erosion, increased sedimentation, increased turbidity, increased noise, increased air quality, and increased water quality in the immediate vicinity.
	<u>Industrial and domestic municipal wastewater</u>	Medium	Industrial and domestic municipal wastewater may result in increased erosion, increased sedimentation, increased turbidity, increased noise, increased air quality, and increased water quality in the immediate vicinity.

LIO Process (2011-2012)

Top 3 Pressures Identified

- Major Oil Spills
- Runoff from the Built Environment (including septic systems)
- Shoreline Development (including shoreline armoring)

LIO Process (2011-2012)

Strategy and NTA Development

- IC refined strategies that address top 3 pressures
- IC rated strategies based on Feasibility and Potential Impact
- IC members took Survey Monkey survey to narrow down Tier 1 and Tier 2 Strategies and NTAs
- Final NTAs developed with more specific performance measures and owners



LIO Process (2011-2012)

Public Involvement

- Multiple presentations to County Council
- October 2011 Public Workshop on inter-island ferry
- Public Comment period
- Leadership Council adoption



Action Agenda Update (2013-2014)

NTA Development

- Pulled in Tier 2 NTAs and natural next steps in Tier 1 NTAs
- Included additional NTAs
- NTAs endorsed to move ahead by County Council
- Direction from AOC to create a shorter list
- Lumping of like actions
- Leadership Council adoption



Action Agenda Update (2013-2014)

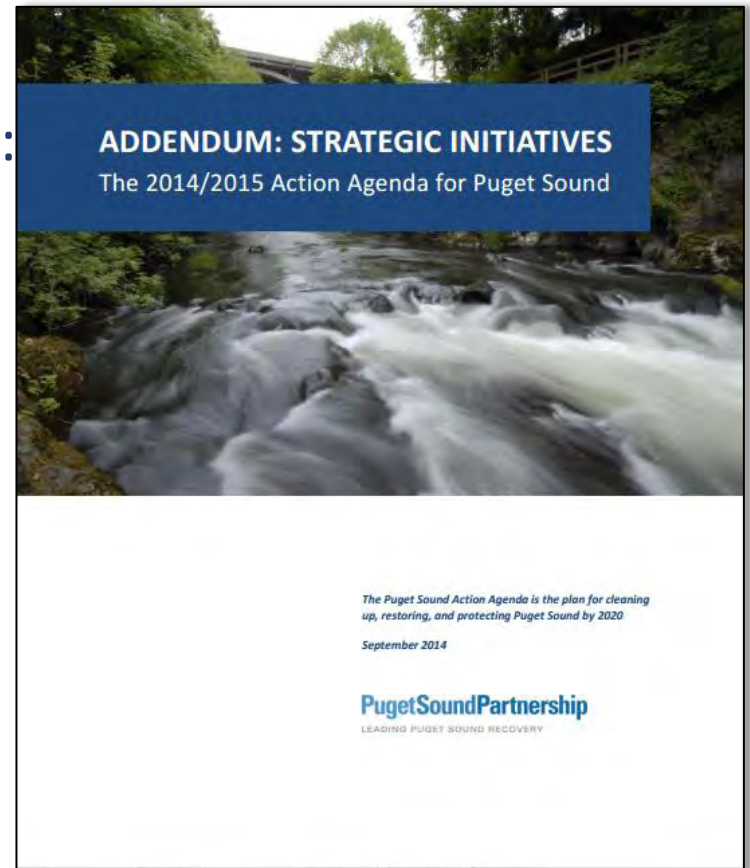
Strategic Initiative Process

- Update to three Strategic Initiatives: Habitat, Stormwater, Shellfish

- Development of new NTA:

C8.3 SJI3 Evaluate Oil Sill Response Capability in the San Juan Islands & Adjacent Waters

- NTA included in Habitat Strategic Initiative



Next Steps

- Continued implementation and reporting on 2014 NTAs
- Framing out 2016 process
- Linking with Puget Sound taxonomies to:
 - Facilitate technical review
 - Allow all LIO-scale planning to “roll up”
 - Share learning across LIOs